

Collaborative Research Centre 228: Future Rural Africa: Baseline Household Survey (2019)

Data Dictionary - Tanzania

Bisrat Haile Gebrekidan¹, Emmanuel Nshakira-Rukundo¹, Gideon Tups², Michael Bollig⁴, Jan Börner¹, Peter Dannenberg², Clemens Greiner³, and Thomas Heckelei¹

¹Institute for Food and Resource Economics, University of Bonn

²Institute of Geography, University of Cologne

³Department of Social and Cultural Anthropology, University of Cologne

⁴Global South Studies Centre, University of Cologne

27/12/2020

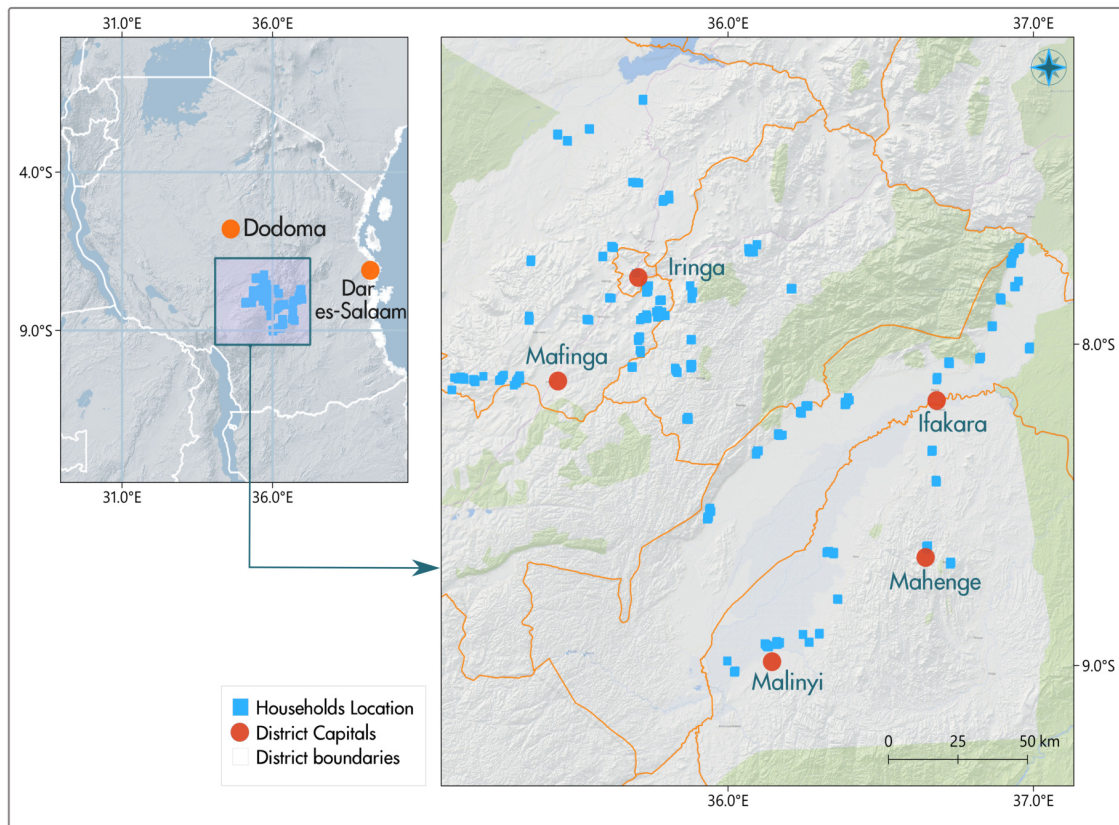
-	
1	Common Variables 5
2	Aspirations 5
3	Assets 11
4	Business 14
5	Business_income 14
6	Crops 14
7	Crops_expenditure 15
8	Crops_income 16
9	Development_projects 16
10	Education_aspirations 17
11	Employment 18
12	Employment_income 19
13	Farming_practises 20
14	Forest_income 23
15	Forest_products 23
16	Geocode 24
17	Household_members 25
18	Income_total 27
19	Land 27
20	Livestock 31
21	Livestock_expenditure 31
22	Livestock_income 32
23	Networks 32
24	Othersource_all_income 33
25	Othersource_income 33
26	Resp_chars 33

27 Risk_timePreference	34
28 Section_duration	35
29 Shocks	36
30 Water_and_sanitation	37

This document contains the data dictionary of CRC-Survey (2019). The data is organized in to 30 sections and only for Tanzania ¹:

- Variables
- Variable label
- Variable Type
- Value labels (If the variable is factor(Categorical))

Note: Each dictionary table corresponds to the file names of the data tables. Common Variables are present on all the data tables. You can find the codebook and html version of the data dictionary in the documentation directory of your download.



Please cite the datasets as follows:

Gebrekidan, B. H., Nshakira-Rukundo, E., Tups, G., Bollig, M., Börner, J., Dannenberg, P., Greiner, C., Heckelej, T., 2021. Collaborative Research Centre 228: Future Rural Africa: Baseline Household Survey (2019) - Tanzania. CRC/TRR228 Database (TRR228DB). DOI:10.5880/TRR228DB.8.

1

- Kenya: <https://www.trr228db.uni-koeln.de/data.php?datalD=97>
- Namibia: <https://www.trr228db.uni-koeln.de/data.php?datalD=98>
- Zambia: <https://www.trr228db.uni-koeln.de/data.php?datalD=99>

1 Common Variables

Variable	Var label	Var type	Value label
region	Region	factor	1=Morogoro 2=Iringa
dist	District	factor	1=Iringa 2=Kilolo 3=Kilombero 4=Ulanga 5=Mailnyi
ea	Enumeration area	character	
hh_no	Household Number	character	
hhid	Household Id	numeric	
strata	Strata	factor	1=Intensification 2=Conservation 3=None
weight	Sampling Weight	numeric	

2 Aspirations

Variable	Var label	Var type	Value label
as01	Number of beans/stones/seeds/ allocated to occupation / employment	numeric	
as02	Number of beans/stones/seeds allocated to education (school degrees)	numeric	
as03	Number of beans/stones/seeds allocated to assets (things of value like land etc.	numeric	
as04	Number of beans/stones/seeds allocated to social status (to be respected by other	numeric	
as05	Number of beans/stones/seeds allocated to cash income	numeric	
asweight	Aspiration weight	character	
occ_wgt	Occupation_employment weight	numeric	
educ_wgt	Education weight	numeric	
ass_wgt	Assets weight	numeric	
sst_wgt	Social status weight	numeric	
inc_wgt	Current cash income weight	numeric	
as10	Have you lent money to anyone in the last 12 months?	factor	0=No 1=Yes
as11	Have you borrowed money from someone in the last 12 months?	factor	0=No 1=Yes
as12	Do you or other current household member have a bank account?	factor	0=No 1=Yes

(continued)

Variable	Var label	Var type	Value label
as13	Are you or any other current household member, a member of a saving and lending a	factor	0=No 1=Yes
as14	Out of your total income in the last month, were you able to save any money?	factor	0=No 1=Yes
as15	Approximately, how much of your income were you able to save last month?	numeric	
as16	What is the most important purpose for which you save money?	character	
as16_1	Reason for saving - for emergency situations	factor	0=No 1=Yes
as16_2	Reason for saving - to build_ buy a house	factor	0=No 1=Yes
as16_3	Reason for saving - for my children	factor	0=No 1=Yes
as16_4	Reason for saving - for my pensions	factor	0=No 1=Yes
as16_5	Reason for saving - to emigrate	factor	0=No 1=Yes
as16_96	Reason for saving - Other (please specify)	factor	0=No 1=Yes
as16__99	Reason for saving - Refuse to answer	factor	0=No 1=Yes
a16_1	Please specify if purpose for saving, is Other	character	
as19	Do you have a mobile money account on which you regularly use for savings & other	factor	0=No 1=Yes
as20	How much do you use the internet (on smart phone or computer)?	factor	1=Daily 2=At least Once a week 3=At least once a month 4=Never
as17	Does this household belong to any other voluntary associations in this village?	factor	0=No 1=Yes
as18	If yes, which type of associations does the household belong to?	character	
as18_1	Membership in a farmers group	factor	0=No 1=Yes
as18_2	Membership in an agriculture cooperative	factor	0=No 1=Yes
as18_3	Membership in a water users group	factor	0=No 1=Yes
as18_4	Membership in a savings and credit association	factor	0=No 1=Yes

(continued)

Variable	Var label	Var type	Value label
as18_5	Membership in a religious group	factor	0=No 1=Yes
as18_6	Membership in a self-help group	factor	0=No 1=Yes
as18_7	Membership in a womens group	factor	0=No 1=Yes
as18_8	Membership in a forest users group	factor	0=No 1=Yes
as18_9	Membership in a Funeral association (burial group)	factor	0=No 1=Yes
as18_10	Membership in a Sports association	factor	0=No 1=Yes
as18_11	Membership in a Nyumba kumi	factor	0=No 1=Yes
as18_12	Membership in a School or HMC	factor	0=No 1=Yes
as18_96	Membership in a Any other voluntary association	factor	0=No 1=Yes
as21	Generally speaking, on a scale of 1 to 5, how satisfied are you with life?	factor	1=Very dissatisfied 2=dissatisfied 3=Neither 4=Satisfied 5=Very satisfied 6=Refuse to answer 7=Do not know
asst01	Evaluating your household on this ladder that represents social status, where do	numeric	
asst02	Where on the social status ladder do you aspire your household to be in 5 years?	numeric	
asast01	Evaluating your household on this ladder representing asset ownership, where do y	numeric	
asast02	Where on the asset ladder do you aspire your household to be in 5 years time?	numeric	
asinc01	Assessing all household income sources, how much income do you aspire to earn per	numeric	
ed01asp	What level of education did your father achieve?	factor	1=Refuse to answer 2=Dont know 3=No formal education 4=Some primary school 5=Some secondary school 6=Some post-secondary school 7=Other schooling (e.g religious schooling)

(continued)

Variable	Var label	Var type	Value label
ed02asp	What level of education did your mother achieve?	factor	1=Refuse to answer 2=Dont know 3=No formal education 4=Some primary school 5=Some secondary school 6=Some post-secondary school 7=Other schooling (e.g religious schooling)
as06	Number of influential people	numeric	
network_count		character	
as09	On how many days in the last 30 days did you talk about either agriculture or yo	numeric	
as_loc01_in	My lifes course depends on me	factor	1=Strongly disagree 2=Disagree 3=Indifferent (neither nor) 4=Agree 5=Strongly agree 6=Refuse to answer 7=I dont know
as_loc02_in	Success is a matter of hard work	factor	1=Strongly disagree 2=Disagree 3=Indifferent (neither nor) 4=Agree 5=Strongly agree 6=Refuse to answer 7=I dont know
as_loc03_in	Abilities are more important than effort	factor	1=Strongly disagree 2=Disagree 3=Indifferent (neither nor) 4=Agree 5=Strongly agree 6=Refuse to answer 7=I dont know
as_loc04_in	When I make plans, I am most certain they will work	factor	1=Strongly disagree 2=Disagree 3=Indifferent (neither nor) 4=Agree 5=Strongly agree 6=Refuse to answer 7=I dont know

(continued)

Variable	Var label	Var type	Value label
as_loc05_in	I am usually able to protect my and my community's interests	factor	1=Strongly disagree 2=Disagree 3=Indifferent (neither nor) 4=Agree 5=Strongly agree 6=Refuse to answer 7=I don't know
trst01	Level of trust in the health care system to meet my and my household's health need	factor	1=strongly distrust 2=distrust 3=indifferent 4=trust 5=strongly trust
trst02	Level of trust in the education system to meet the educational needs of my children	factor	1=strongly distrust 2=distrust 3=indifferent 4=trust 5=strongly trust
trst03	Level of trust in the police and judicial system	factor	1=strongly distrust 2=distrust 3=indifferent 4=trust 5=strongly trust
trst04	Level of trust in the government (central and local) that it has my and my community's interests	factor	1=strongly distrust 2=distrust 3=indifferent 4=trust 5=strongly trust
trst05	Level of trust in the traditional leadership system	factor	1=strongly distrust 2=distrust 3=indifferent 4=trust 5=strongly trust
prt01	How do you (household head) rate your voice and power to influence decisions about	factor	1=No influence 2=some but low influence 3=average level of influence 4=high influence 5=Very high influence 6=Refuse to answer 7=I don't know
exp_ev1_01	Worry about Job loss or economic livelihoods	factor	1=Not at all worried 2=Slightly worried 3=Worried 4=Very worried 5=Extremely worried

(continued)

Variable	Var label	Var type	Value label
exp_ev1_03	Worry about Serious illness	factor	1=Not at all worried 2=Slightly worried 3=Worried 4=Very worried 5=Extremely worried
exp_ev1_05	Worry about Food insecurity	factor	1=Not at all worried 2=Slightly worried 3=Worried 4=Very worried 5=Extremely worried
exp_ev1_06	Worry about Climate change (floods & long droughts)	factor	1=Not at all worried 2=Slightly worried 3=Worried 4=Very worried 5=Extremely worried
exp_ev1_07	Worry about Depletion of natural resources	factor	1=Not at all worried 2=Slightly worried 3=Worried 4=Very worried 5=Extremely worried
exp_ev1_11	Worry about Loss of friendships & social networks	factor	1=Not at all worried 2=Slightly worried 3=Worried 4=Very worried 5=Extremely worried
exp_ev1_12	Worry about Loss of Cultural traditions	factor	1=Not at all worried 2=Slightly worried 3=Worried 4=Very worried 5=Extremely worried
exp_ev1_13	Worry about Political upheavals	factor	1=Not at all worried 2=Slightly worried 3=Worried 4=Very worried 5=Extremely worried
exp_ev1_14	Worry about clan/ tribal violence	factor	1=Not at all worried 2=Slightly worried 3=Worried 4=Very worried 5=Extremely worried
exp_ev1_15	Worry about Exclusion from political-decision making	factor	1=Not at all worried 2=Slightly worried 3=Worried 4=Very worried 5=Extremely worried

(continued)

Variable	Var label	Var type	Value label
time_aspire	Meta Data (time it took to complete the aspiration section)	character	

3 Assets

Variable	Var label	Var type	Value label
h02	How many separate rooms does the households house (residence) have?	numeric	
h03	What is the major construction material of the roof?	factor	1=Iron sheets 2=Tiles 3=Asbestos 4=Concrete 5=Tin 6=Thatched grass 7=Other (please specify)
h04	What is the major construction material of the external wall?	factor	1=Grass 2=Mud with poles 3=Unburnt bricks with mud 4=Bricks with cement 5=Concrete 6=Wood 7=Tin/iron sheets/mabaati 8=Burnt bricks with mud
h05	What is the major material of the floor?	factor	1=Sand 2=Smooth earth (soil) 3=Cement screed 4=Wood 5=Ceramic or other tiles 6=Other (specify)
h06	What is the main source of water for household use?	factor	1=Piped water (house or public) 2=Protected (borehole protected well public taps rain water) 3=Unprotected source (well spring river lake tank truck)
h07	What type of toilet is mainly used by household members?	factor	1=Flush toilet 2=VIP latrine 3=Covered pit latrine with slab 4=Covered pit latrine without a slab 5=Uncovered pit latrine 6=Ecosan toilet 7=No facility/Bush/polythene 8=Other (please specify)

(continued)

Variable	Var label	Var type	Value label
h09	Does this household have access to electricity or solar or any other type of elec	factor	0=No 1=Yes
h10	What type of energy do you use for cooking?	character	
h10_1	Energy used for cooking - Electric cookers	factor	0=No 1=Yes
h10_2	Energy used for cooking - Gas (incl. biogas)	factor	0=No 1=Yes
h10_3	Energy used for cooking - Charcoal	factor	0=No 1=Yes
h10_4	Energy used for cooking - Firewood	factor	0=No 1=Yes
h10_5	Energy used for cooking - Other biomass burning	factor	0=No 1=Yes
h10_96	Energy used for cooking - Any other energy for cooking	factor	0=No 1=Yes
h11	What type of energy do you use for lighting?	character	
h11_1	Energy used for lighting - Electricity	factor	0=No 1=Yes
h11_2	Energy used for lighting - Solar	factor	0=No 1=Yes
h11_3	Energy used for lighting - Gas (biogas)	factor	0=No 1=Yes
h11_4	Energy used for lighting - Lamp oil	factor	0=No 1=Yes
h11_5	Energy used for lighting - Candle	factor	0=No 1=Yes
h11_6	Energy used for lighting - Firewood	factor	0=No 1=Yes
h11_7	Energy used for lighting - Private generator	factor	0=No 1=Yes
h11_8	Energy used for lighting - Torch	factor	0=No 1=Yes
h11_96	Energy used for lighting - Any other energy for lighting	factor	0=No 1=Yes
h03_1	Please specify if roof material is Other	character	
h04_1	Please specify if wall material is Other	character	
h05_1	Please specify if floor material is Other	character	
h07_1	Please specify if toilet used is Other	character	
ha2_1	Number of simple mobile phones owned	numeric	
ha2_3	Number of simple mobile phones owned 5 years ago	numeric	
ha3_1	Number of smart phones owned	numeric	

(continued)

Variable	Var label	Var type	Value label
ha3_2	Number of smart phones owned 5 years ago	numeric	
ha4_1	Number of Motor vehicle owned	numeric	
ha4_3	Number of Motor car owned 5 years ago	numeric	
ha5_1	Number of Motor cycle/ scooter owned	numeric	
ha5_3	Number of Motor cycle owned 5 years ago	numeric	
ha6_1	Number of Bicycle owned	numeric	
ha6_3	Number of Bicycle owned 5 years ago	numeric	
ha7_1	Number of Other buildings owned	numeric	
ha7_3	Number of Other buildings owned 5 years ago	numeric	
ha8_1	Number of Electric stove owned	numeric	
ha8_3	Number of Electric stove owned 5 years ago	numeric	
ha9_1	Number of Gas or paraffin stove owned	numeric	
ha9_3	Number of Gas or paraffin stove owned 5 years ago	numeric	
ha10_1	Number of Microwave oven owned	numeric	
ha10_3	Number of Microwave oven owned 5 years ago	numeric	
ha11_1	Number of Refrigerator owned	numeric	
ha11_3	Number of Refrigerator owned 5 years ago	numeric	
ha12_1	Number of Freezer owned	numeric	
ha12_3	Number of Freezer owned 5 years ago	numeric	
ha13_1	Number of Washing Machine owned	numeric	
ha13_3	Number of Washing Machine owned 5 years ago	numeric	
ha14_1	Number of Radio owned	numeric	
ha14_3	Number of Radio owned 5 years ago	numeric	
ha15_1	Number of Television owned	numeric	
ha15_3	Number of Television owned 5 years ago	numeric	
ha16_1	Number of Computer- laptop or desktop owned	numeric	
ha16_3	Number of Computer- laptop or desktop owned 5 years ago	numeric	
ha18_1	Number of Living room furniture set owned	numeric	
ha18_3	Number of Living room furniture set owned 5 years ago	numeric	
ha28_1	Number of plastic chairs owned	numeric	
ha28_3	Number of plastic chairs owned 5 years ago	numeric	

(continued)

Variable	Var label	Var type	Value label
ha22_1	Number of Plough owned	numeric	
ha22_3	Number of Plough owned 5 years ago	numeric	
ha24_1	Number of Wheelbarrow owned	numeric	
ha24_3	Number of Wheelbarrow owned 5 years ago	numeric	
ha26_1	Number of boats owned	numeric	
ha26_3	Number of boats owned 5 years ago	numeric	

4 Business

Variable	Var label	Var type	Value label
bizno	If yes, how many business ventures is the household involved in?	numeric	
biz_name	What type of business is it? (Name of business)	character	
biz_sales	Approximately, how much was the total (gross) sales in the last 30 days?	numeric	
biz_inputs	How much did the household spend on inputs for this business in the last 30 days	numeric	
biz_lbr	How much did the household spend on hired labour in the last 30 days?	numeric	
biz_kcosts	How much did the household spend on capital costs (machinery, maintenance or rent	numeric	
biz_othcost	How much did the household spend on other costs for this business in the last 30	numeric	
biz_inc	Income from (this)business	numeric	
biz_name_ENG2	What type of business is it? (Name of business) English	character	

5 Business_income

Variable	Var label	Var type	Value label
net_biz_inc	Net income (sales) from business	numeric	
biz_cost	Total business cost	numeric	
gross_biz_inc	Gross income (sales) from business	numeric	

6 Crops

Variable	Var label	Var type	Value label
crop_area	Approximately how much land (in the SAME AREA UNITS as before under land ownershi	numeric	
crop_harvest	Has the { <i>crop_name</i> } been harvested?	factor	1=Yes 0=No
crop_output	How much of crop was harvested?	numeric	
crop_unit	In what unit was the harvest of { <i>crop_name</i> } measured?	character	
cp07	Did you apply any organic fertilizer (manure) in the cultivation of rice?	factor	0=No 1=Yes
cp08	Did you apply any inorganic fertilizer in the cultivation rice?	factor	0=No 1=Yes
cp09	Did you apply any pesticide or herbicide for rice?	factor	0=No 1=Yes
crop_cp_seed	What type of seeds were used in the cultivation rice?	factor	1=Traditional seeds 2=Improved seeds 3=Hybrid seeds
season	Production Season	factor	1=Main 2=Short
crop_name	Name of crop	character	
market_price_kg	Market price of { <i>crop</i> } per kg	numeric	
kg_converter	Kg Converter	numeric	
crop_val	Crop value	numeric	

7 Crops_expenditure

Variable	Var label	Var type	Value label
crp_ip1_exp	Approximate amount of money spent on seeds and seedlings in last 12 months?	numeric	
crp_ip3_exp	Approximate amount of money spent on fertilizers/manure in last 12 months?	numeric	
crp_ip5_exp	Approximate amount of money spent on Pesticides in last 12 months?	numeric	
crp_ip6_exp	Approximate amount of money spent on Machinery (e.g. tractors) in last 12 months	numeric	
crp_ip7_exp	Approximate amount of money spent on Hired labour in last 12 months?	numeric	
crp_ip8_exp	Approximate amount of money spent on renting Land in last 12 months?	numeric	
crp_ip9_exp	Approximate amount of money spent on transport for inputs and produce to and from	numeric	
crp_ip10_exp	Approximate amount of money spent on Other inputs in last 12 months?	numeric	

(continued)

Variable	Var label	Var type	Value label
tot_crop_exp	Total crop expenditure	numeric	

8 Crops_income

Variable	Var label	Var type	Value label
gross_crop_inc	Gross income from crops	numeric	
net_crop_inc	Net income from crops	numeric	

9 Development_projects

Variable	Var label	Var type	Value label
project	Development Projects name	factor	1=SAGCOT 2=Stieglers Gorge Dam 3=Large-scale agriculture 4=(Large scale) irrigation schemes 5=roads or railways 6=Other Development Project
dp_	Do you know this development project	factor	0=No 1=Yes
dp10_other	Please specify which other development project you know of	character	
dp_know	How did you know about this development project	factor	1=NGOs 2=Company implementing 3=County officials/politicians 4=Live in the project area 5=Neighbours or friends 6=media (newspapers & or radio or printed material) 7=Rumours 8=Information events (baraza) 9=Other (please specify)
dp_land	Do you know of any land registration process associated with this project?	factor	0=No 1=Yes

(continued)

Variable	Var label	Var type	Value label
dp_lnd_kw	How did you know about land registration process associated with this project?	factor	1=NGOs 2=Company implementing 3=County officials/politicians 4=Live in the project area 5=Neighbours or friends 6=media (newspapers & or radio or printed material) 7=Rumours 8=Information events (baraza) 9=Other (please specify)
dpwork	Does any household member (including yourself) work or has worked for this projec	factor	0=No 1=Yes
dpnextgen	How do you think this project will affect the next generation?	factor	1=Very negative effect 2=Negative effect 3=Neutral (or no effect) 4=Positive effect 5=Very positive effect
dpnextresl	Reason for the percieved effect of this project on the next generation	character	
dpeffliv	What effect do you think the {project} will have on agriculture activities in t	factor	1=Positively 2=Negatively 3=No effect at all
dpres	Could you please give a reason why you think this project has this effect on on a	character	
dpresettle	Do you know about household resettlement in the context of this project?	factor	0=No 1=Yes
dpcompe	Do you know about compensation payment for resettlement due to this project?	factor	0=No 1=Yes

10 Education_aspirations

Variable	Var label	Var type	Value label
pid	Personal Id	character	
ed03asp	What level of education do you aspire {less11_name}?	character	
asocp01	What profession or occupation do you aspire {less11_name}?	character	
asocp02_ENG_1	What profession or occupation do you aspire {less11_name}English?	character	
ha03	{name}'s gender?	factor	1=Female 2=Male
age	What is {name}'s age in complete years?	numeric	

(continued)

Variable	Var label	Var type	Value label
----------	-----------	----------	-------------

11 Employment

Variable	Var label	Var type	Value label
pid	Personal Id	numeric	
lbr01	Is <i>{name}</i> employed or involved in any income generating activity, including fa	factor	0=No 1=Yes
lbr02	In what activity does <i>{name}</i> spend most of his/ her work time in the last 12 mo	character	
lbr08	In which sector is <i>{name}</i> 's main income activity?	factor	1=Refuse to answer 2=Do not know 3=Agriculture 4=Health or Education 5=Other public sector 6=Tourism 7=Retail trade 8=Transport 9=Construction 10=Leisure & hospitality 11=Security services 12=Other service sector
lbr09	Has <i>{name}</i> received any professional education or training for this activity?	factor	0=No 1=Yes
lbr10	What best describes <i>{name}</i> 's contract status in this activity?	factor	1=Refuse to answer 2=Do not know 3=Long term permanent contract 4=Fixed term permanent contract 5=Part-time contract 6=Daily wage labourer 7=No contract (informal) 8=Self-employed/ own firm 9=Volunteering 10=Apprenticeship / internship 11=Other (specify)
lbr10_1	Please specify if <i>{name}</i> 's contract type is Other	character	
lbr_loc	Where is <i>{name}</i> 's workplace located?	factor	1=In this village 2=In other rural area within or outside this district 3=Town/ or city within this district/ region 4=Town/ or city in another district/region

(continued)

Variable	Var label	Var type	Value label
lbr11	On scale of 1 to 5, how satisfied is { <i>name</i> } with this activity/ job?	factor	1=Very dissatisfied 2=dissatisfied 3=Neither 4=Satisfied 5=Very satisfied 6=Refuse to answer 7=Do not know
lbr13	In the last 12 months, has { <i>name</i> } undertaken any work on the farm?	factor	0=No 1=Yes
wk_months	In the last year, how many months did { <i>worker_name</i> } work at this off-farm activ	numeric	
wk_days	In a typical week, how many days did { <i>worker_name</i> } work?	numeric	
wk_inc	What was { <i>worker_name</i> }s estimated monthly income?	numeric	
lbr02_new	In what activity does { <i>name</i> } spend most of his/ her work time in the last 12 mo	character	
fom_emp_inc	Has income from formal jobs	factor	0=No 1=Yes
crop_emp_inc	Has income from Crops	factor	0=No 1=Yes
inf_emp_inc	Has income from Informal jobs	factor	0=No 1=Yes
liv_emp_inc	Has income from Livestock	factor	0=No 1=Yes
biz_emp_inc	Has income from Business	factor	0=No 1=Yes

12 Employment_income

Variable	Var label	Var type	Value label
tot_biz	Total household income from businesses (emplyoment module)	numeric	
tot_crop	Total household income from crops (emplyoment module)	numeric	
tot_form	Total household income from formal jobs (emplyoment module)	numeric	
tot_inf	Total household income from informal jobs (emplyoment module)	numeric	
tot_liv	Total household income from livestock (emplyoment module)	numeric	

13 Farming_practises

Variable	Var label	Var type	Value label
cp022	Do you currently irrigate at least one of your land parcels?	factor	0=No 1=Yes
cp023	Do you know any (other) farmers in this village who irrigate their plots?	factor	0=No 1=Yes
cp023_num	How many farmers do you know that irrigate their plots?	numeric	
cp024	Do you plan to irrigate your plot in the future?	factor	0=No 1=Yes
cp025	Have you taken part in any farmer training in the last 5 years?	factor	0=No 1=Yes
irr_num	How many farmer trainings have you taken part in?	numeric	
cp026	Which category describes best the topic of training you had	character	
cp026_1	Seeds/planting	factor	0=No 1=Yes
cp026_2	Fertilizer type and application	factor	0=No 1=Yes
cp026_3	Pesticide types and application	factor	0=No 1=Yes
cp026_4	Land management (erosion control, crop rotate, etc.)	factor	0=No 1=Yes
cp026_5	Agro-processing	factor	0=No 1=Yes
cp026_6	Crop storage	factor	0=No 1=Yes
cp026_7	Marketing	factor	0=No 1=Yes
cp026_96	Other topic	factor	0=No 1=Yes
cp026_oth	Category of training if Other	character	
cp027	Who provided the training?	character	
cp027_1	Government (extension officer)	factor	0=No 1=Yes
cp027_2	Private company	factor	0=No 1=Yes
cp027_3	NGO	factor	0=No 1=Yes
cp027_96	Other training organisation	factor	0=No 1=Yes
cp027__88	Don't know	factor	0=No 1=Yes
cp027_other	Training provider, if other	character	

(continued)

Variable	Var label	Var type	Value label
cp028	In the last 12 months, did you take any loan to finance your agricultural inputs	factor	0=No 1=Yes
cp028_inst	From which institution did you take the loan?	character	
cp028_inst_1	Family, friend or relative	factor	0=No 1=Yes
cp028_inst_2	Bank	factor	0=No 1=Yes
cp028_inst_3	Savings & credit Soc	factor	0=No 1=Yes
cp028_inst_4	Cooperative	factor	0=No 1=Yes
cp028_inst_5	Trader/trade store	factor	0=No 1=Yes
cp028_inst_6	Money lender / private individual	factor	0=No 1=Yes
cp028_inst_7	NGO/Development Project	factor	0=No 1=Yes
cp029	Are you a member of any agricultural cooperative?	factor	0=No 1=Yes
cp030	Do you intend to join a cooperative in future?	factor	0=No 1=Yes
cp031	During the last seasons, did you observe any changes with regard to the onset of	factor	1=No changes 2=earlier onset of rain 3=Later onset of rain
cp032	Did you observe any changes with regard to the onset of the long rainy season	factor	1=No changes 2=earlier onset of rain 3=Later onset of rain
crop_residue	What do you normally do with residues crop crops after harvest?	character	
crop_residue_1	Crops had no residue	factor	0=No 1=Yes
crop_residue_2	Residue was left in field	factor	0=No 1=Yes
crop_residue_3	residue was burned	factor	0=No 1=Yes
crop_residue_4	Used for grazing/feeding animals	factor	0=No 1=Yes
crop_residue_5	For sale	factor	0=No 1=Yes
crop_residue_96	Other disposal of residues	factor	0=No 1=Yes

(continued)

Variable	Var label	Var type	Value label
pd_env1	On a scale of 1-5, How much do you agree with the following statements that desc	factor	1=Strongly disagree 2=Disagree 3=Indifferent (neither nor) 4=Agree 5=Strongly agree
pd_env2	I balance between productivity and environmental constraints	factor	1=Strongly disagree 2=Disagree 3=Indifferent (neither nor) 4=Agree 5=Strongly agree
pd_env3	I preserve my environment as best as I can	factor	1=Strongly disagree 2=Disagree 3=Indifferent (neither nor) 4=Agree 5=Strongly agree
cp034	How often do you discuss environmental issues related to this community with othe	factor	1=Never talk about the environment 2=Sometimes talk about the environment 3=Always / regularly talk about the environment
rank1	Important knowledge sources for farm management decision - rank 1	factor	1=Ancestors experiences 2=Farmer colleagues 3=Own experience 4=Extension service 5=Field days 6=News 7=mobile phone or app
rank2	Important knowledge sources for farm management decision - rank 2	factor	1=Ancestors experiences 2=Farmer colleagues 3=Own experience 4=Extension service 5=Field days 6=News 7=mobile phone or app
rank3	Important knowledge sources for farm management decision - rank 3	factor	1=Ancestors experiences 2=Farmer colleagues 3=Own experience 4=Extension service 5=Field days 6=News 7=mobile phone or app

(continued)

Variable	Var label	Var type	Value label
rank4	Important knowledge sources for farm management decision - rank 4	factor	1=Ancestors experiences 2=Farmer colleagues 3=Own experience 4=Extension service 5=Field days 6=News 7=mobile phone or app

14 Forest_income

Variable	Var label	Var type	Value label
gross_envirou_inc	Gross environmental income	numeric	
fstpd_t_expamt	If yes, how much was spent in harvesting {fstpd_t_nm}?	numeric	
net_envirou_inc	Net environmental income	numeric	

15 Forest_products

Variable	Var label	Var type	Value label
frtpdts_num	How many different environmental products did you harvest in the last 12 months	numeric	
fstpd_t_ch	In general, during the past 10 years, has the household experienced any changes i	factor	1=Stay the same 2=Decrease 3=Increase/improve 4=Refuse to answer 5=I dont know
fstpd_t_ch2	Do you expect any changes in the availability of environmental products in the 10	factor	1=Stay the same 2=Decrease 3=Increase/improve 4=Refuse to answer 5=I dont know
f027	What is the main reason for increases in the availability of products and servic	character	
f028	What is the main reason for decreases in the availability of products and servic	character	
fstpd_t_nm	Name of product from the environment	character	
fstpd_t_qty	How much quantity of {fstpd_t_nm} was harvested or collected?	numeric	
fstpd_t_unt	In what units was {fstpd_t_nm} measured after harvest or collectio?	character	

(continued)

Variable	Var label	Var type	Value label
fstpdt_unt_oth	Please specify if units of measurement for {fstpdt_nm} is other	character	
fstpdt_sl	Was any {fstpdt_nm} sold?	factor	0=No 1=Yes
fstpdt_slqty	How much quantity of {fstpdt_nm} was sold?	numeric	
fstpdt_slunit	Units of measurement of {fstpdt_nm} sold	factor	1=Grams 2=Kilograms 3=Liters 4=Numbers 5=Basins 6=2kg packet 7=10kg bag 8=25kg bag 9=50 kg bag 10=100 kg bag 11=Crates 12=Bunches 13=Gorogoro 14=Debe 15=Wheelbarrow 16=Bale 17=Tonnes 18=Canter 19=Packet (e.g salt, cigarattes) 20=Tins (eg milk tins) 21=No harvest yet or No harvest 22=Other (please specify)
fstpdt_slpssd	Was the {fstpdt_nm} processed before selling?	factor	0=No 1=Yes
fstpdt_slprc	What was the price for each unit of {fstpdt_nm} sold?	numeric	
fstpdt_exp	Did you spend any money in the harvesting of {fstpdt_nm}?	factor	0=No 1=Yes
fstpdt_vl	Total value of forest Product	character	
fstpdt_nm_en	Name of product from the environment_english	character	
fstpdt_slprc_new		numeric	
environ_inc_pdt	Environmental income	numeric	

16 Geocode

Variable	Var label	Var type	Value label
geolatitude	Latitude, longitude and altitude of the survey point (latitude)	numeric	
geolongitude	Latitude, longitude and altitude of the survey point (longitude)	numeric	
geoaltitude	Latitude, longitude and altitude of the survey point (altitude)	numeric	
geoaccuracy	Latitude, longitude and altitude of the survey point (accuracy)	numeric	

17 Household_members

Variable	Var label	Var type	Value label
pid	Personal Id	numeric	
ha03	{name}'s gender?	factor	0=Female 1=Male
age	What is {name}'s age in complete years?	numeric	
ha_rel	{name}'s relationship to the household head	factor	1=Head 2=Spouse 3=Daughter or son 4=grand child 5=Other relative (parents of the head or spouse, inlaws etc) 6=Non-relative
migr_itt	Does {name} have any intention to temporarily or permanently migrate from this	factor	1=Refuse to answer 2=Dont Know 3=Yes permanently migrate 4=Yes temporarily migrate 5=No intention to migrate
migr_desti	What is {name}'s preferred destination?	factor	1=Refuse to answer 2=Dont Know 3=Town in region 4=Town outside region 5=Capital city 6=Outside the country

(continued)

Variable	Var label	Var type	Value label
educ1	What is {name}'s level of education?	factor	1=No formal education 2=Nurse/ Kindergarten/ECD 3=Primary 1 4=Primary 2 5=Primary 3 6=Primary 4 7=Primary 5 8=Primary 6 9=Primary 7 10=Secondary school Year 1 11=Secondary school Year 2 12=Secondary school Year 3 13=Secondary school Year 4 14=Secondary school Year 5 15=Secondary school Year 6 16=Post secondary tertiary college 17=University level 18=Post graduate university level 19=Adult Literacy 20=Religious education 21=Other educational training
educ2	Is {name} currently attending school?	factor	0=No 1=Yes
educ3	If yes, how much money, has the household spent on {name} schooling during the	numeric	
marital	What is {name}'s current marital status?	factor	1=Married monogamously 2=Married polygamously 3=Divorced /Separated 4=Widow/ Widower 5=Never Married
ha07	What is {name}'s ethnic group?	character	
religio	What is {name}'s religion?	factor	1=Refuse to answer 2=Does not know 3=Catholic 4=Protestant demoninations (incl all non-catholic denominations) 5=Muslim 6=African Traditional religion 7=Non-religious 8=Other (please specify)
religio_1	{name}'s Religion, if response is Other	character	
in_migrat	Was {name} born and raised in this locality?	factor	0=No 1=Yes

(continued)

Variable	Var label	Var type	Value label
migr_plc	If No, from where did {name} migrate to this village?	factor	1=Refuse to answer 2=Don't know 3=From another village in this district 4=From another district in this region 5=From another region in Tanzania 6=From another country
migr_yr	In which year {name} migrate to the current locality?	numeric	
migr_res	What was the main reason for {name}'s migration to the current locality?	factor	1=Refuse to answer 2=Dont know 3=Employment (short or permanent) 4=Education 5=Marriage 6=Divorce 7=Conflict (displacement abduction eviction) 8=Health & medical reasons (including disability) 9=Drought flood or other weather related condition (including grazing) 10=Family reunion 11=Other (specify)
migr_res_1	Reason for {name}'s migration, if Other	character	
h07_new	Ethnic group of the household head (cleaned)	character	
migr_res_new	Reason for migrating(translated to english)	character	

18 Income_total

Variable	Var label	Var type	Value label
tot_gross_hh_inc	Total Gross household income	numeric	
tot_net_hh_inc	Total Net household income	numeric	

19 Land

Variable	Var label	Var type	Value label
Ind_mes	How is land measured in this region?	factor	1=Acres 2=Hectares 3=Other (please specify)
Ind_mes_1	Please specify if response to land measurement is Other and provide conversion fa	character	
Ind01	Cropland	numeric	
Ind02	Fallow	numeric	
Ind03	Agroforestry or forestry	numeric	
Ind04	Pasture (natural or planted)	numeric	
Ind08	Residential land	numeric	
Ind06	Other land use types	numeric	
Ind07	Total land owned	numeric	
Ind_ten01	Ownership status of Crop land	factor	1=Refuse to answer 2=Dont Know 3=State owned 4=Private owned with land title 5=Private owned with no land title 6=Leased/rented 7=Communally owned 8=Co-share/ co-farming
Ind_ten02	Ownership status for Fallow	factor	1=Refuse to answer 2=Dont Know 3=State owned 4=Private owned with land title 5=Private owned with no land title 6=Leased/rented 7=Communally owned 8=Co-share/ co-farming
Ind_ten03	Ownership status for Agroforestry or forestry	factor	1=Refuse to answer 2=Dont Know 3=State owned 4=Private owned with land title 5=Private owned with no land title 6=Leased/rented 7=Communally owned 8=Co-share/ co-farming
Ind_ten04	Ownership status for Pasture (natural or planted)	factor	1=Refuse to answer 2=Dont Know 3=State owned 4=Private owned with land title 5=Private owned with no land title 6=Leased/rented 7=Communally owned 8=Co-share/ co-farming

(continued)

Variable	Var label	Var type	Value label
Ind_ten08	Ownership status of residential land	factor	1=Refuse to answer 2=Dont Know 3=State owned 4=Private owned with land title 5=Private owned with no land title 6=Leased/rented 7=Communally owned 8=Co-share/ co-farming
Ind_ten06	Other land use types	factor	1=Refuse to answer 2=Dont Know 3=State owned 4=Private owned with land title 5=Private owned with no land title 6=Leased/rented 7=Communally owned 8=Co-share/ co-farming
Ind_07	Have you ever been involved in a land dispute concerning any of the land parcels	factor	0=No 1=Yes
Ind_08	With whom did you have a land dispute?	factor	1=Within family 2=Other individuals 3=Government 4=Other (please specify)
Ind_08_1	Please specify if dispute was with Other	character	
Ind_09	Where did you go for arbitration to resolve the dispute?	factor	1=Nowhere 2=Clan / Elder 3=Village headman / chairperson 4=Neighbours 5=LC Court 6=Magistrate 7=Tried to sort out ourselves 8=Other (please specify)
Ind_09_1	Please specify if you did arbitration with Other	character	
Ind_10	Was the dispute resolved?	factor	0=No 1=Yes
Ind_11	How likely do you think there will be a dispute over your land ownership in the n	factor	1=Very unlikely 2=unlikely 3=Maybe, maybe not 4=Likely 5=Very likely. 6=Refuse to answer 7=I dont know
Ind_12	Are you taking any action to protect your household from future possible land dis	factor	0=No 1=Yes

(continued)

Variable	Var label	Var type	Value label
Ind_13	If yes, what actions are you taking to protect yourself from future disputes or l	character	
Ind_13_1	Protecting land disputes - Invest in education	factor	0=No 1=Yes
Ind_13_2	Protecting land disputes - Obtain formal document	factor	0=No 1=Yes
Ind_13_3	Protecting land disputes - Demarcate boundaries	factor	0=No 1=Yes
Ind_13_4	Protecting land disputes - Cultivate the land	factor	0=No 1=Yes
Ind_13_5	Protecting land disputes - Invest in the land	factor	0=No 1=Yes
Ind_13_6	Protecting land disputes - avoid following	factor	0=No 1=Yes
Ind_13_7	Protecting land disputes - Stay on the land	factor	0=No 1=Yes
Ind_13_8	Protecting land disputes - Do not rent out land	factor	0=No 1=Yes
Ind_13_9	Protecting land disputes - Seek protection from leaders	factor	0=No 1=Yes
Ind_13_10	Protecting land disputes - Try to sell the land	factor	0=No 1=Yes
Ind_13_96	Protecting land disputes - Other	factor	0=No 1=Yes
f01	Has the household cleared any land from natural vegetation (including fallow vege	factor	0=No 1=Yes
f03	How much area with natural vegetation (including fallow vegetation) was cleared	numeric	
f04	For which purpose was the land cleared?	factor	1=Crops 2=Grazing 3=Buildings 4=Other (specify)
f04_1	Please specify if purpose for clearing forest is Other	character	
f05	Over the past 5 years, how many trees has the household planted?	numeric	
Ind_14	In general, how has the availability of land changed over the last 5 years?	factor	1=Stay the same 2=Decrease 3=Increase/improve 4=Refuse to answer 5=I dont know

(continued)

Variable	Var label	Var type	Value label
Ind_15	How do you think the availability of land will change in the next 5 years?	factor	1=Stay the same 2=Decrease 3=Increase/improve 4=Refuse to answer 5=I dont know
time_land	Meta Data (time it took to complete the land section)	character	

20 Livestock

Variable	Var label	Var type	Value label
lvstk_type	Livestock code	factor	1=Cattle 2=Goats 3=Sheep 4=Pigs 5=Chicken 6=Turkeys 7=Ducks 8=Rabbits 9=Donkeys 10=Guinea fowls
lvnumber_	Number of livestock owned	numeric	
price_	Price of the Livestock	numeric	
inc_	Income from livestock in last 12 months	numeric	
num_curr_	Number currently owned	numeric	
sold_	Number sold in the last 12 months	numeric	
ownuse_	Slaughtered for own use	numeric	
gift_	Number given as gifts (including bridal gifts)	numeric	
lost_	Livestock lost to illness, disease or theft	numeric	
awc_	Losses from wildlife conflicts	numeric	
new_price	Price (revised)	numeric	
liv_inc	Income from the sale of livestock	numeric	

21 Livestock_expenditure

Variable	Var label	Var type	Value label
lvexp01_11	Feed or fodder	numeric	
lvexp02_12	Rent for grazing land	numeric	
lvexp03_13	Medicines, vaccination, insemination and other vet services	numeric	

(continued)

Variable	Var label	Var type	Value label
lvexp04_14	Maintenance of livestock shelter (pens, barns, kraals etc.)	numeric	
lvexp05_15	Hired labour for livestock management	numeric	
lvexp06_16	Any other livestock related expense (e.g salt)?	numeric	

22 Livestock_income

Variable	Var label	Var type	Value label
gross_liv_inc	Income from the sale of livestock	numeric	
liv_pdt_inc	If yes, what was the total income earned from livestock products in the last 12	numeric	
liv_exp	Total Expenditure on livestock	numeric	
net_liv_inc	Total income from all livestock sales and products minus livestock expenses	numeric	

23 Networks

Variable	Var label	Var type	Value label
as07	Which of the following functions applies to {in.fper}?	character	
as07_1	Networks community function - government worker	factor	0=No 1=Yes
as07_2	Networks community function - religious leader	factor	0=No 1=Yes
as07_3	Networks community function - traditional/ cultural leader	factor	0=No 1=Yes
as07_4	Networks community function - Teacher or health worker	factor	0=No 1=Yes
as07_5	Networks community function - agricultural innovator / model farmer	factor	0=No 1=Yes
as07_6	Networks community function - Friend	factor	0=No 1=Yes
as07_7	Networks community function - relative	factor	0=No 1=Yes
as07_8	Networks community function - NGO worker	factor	0=No 1=Yes
as07_9	Networks community function - Neighbour	factor	0=No 1=Yes
as07_96	Networks community function - Other important role	factor	0=No 1=Yes

(continued)

Variable	Var label	Var type	Value label
as07__88	Networks community function - Dont know	factor	0=No 1=Yes
as07__99	Networks community function - Refuse to answer	factor	0=No 1=Yes
as08	On how many days in the last 30 days did you have an elaborate conversion with	numeric	

24 Othersource_all_income

Variable	Var label	Var type	Value label
tot_oth_inc	Total other income	numeric	

25 Othersource_income

Variable	Var label	Var type	Value label
inc_source	Other Income source code	factor	1=Remittances 2=Pensions 3=Transfers 4=Compensation 5=PES 6=Rental & Property
incl_	Recieved income from this source	factor	0=No 1=Yes
incint_	Amount received	character	
incamt_	Interval of receiving income	numeric	
annual_amt_	Annualised income from other sources	numeric	

26 Resp_chars

Variable	Var label	Var type	Value label
pid	Personal Id	numeric	
ha03	{name}'s gender?	factor	0=Female 1=Male
age	What is {name}'s age in complete years?	numeric	

(continued)

Variable	Var label	Var type	Value label
ha_rel	{name}'s relationship to the household head	factor	1=Head 2=Spouse 3=Daughter or son 4=grand child 5=Other relative (parents of the head or spouse, inlaws etc) 6=Non-relative
res_head	Is the respondent the head of household?	character	
numfamily	number of households	numeric	

27 Risk_timePreference

Variable	Var label	Var type	Value label
timpref1	Choice between 20,000 shs right now or 20,000 in three (3) months from now	factor	1=Option A - current offer 2=Option B - Future offer
timpref2	Choice between 20,000 shs right now or 23,000 in three (3) months from now	factor	1=Option A - current offer 2=Option B - Future offer
timpref3	Choice between 20,000 shs right now or 26,000 in three (3) months from now	factor	1=Option A - current offer 2=Option B - Future offer
timpref4	Choice between 20,000 shs right now or 29,000 in three (3) months from now	factor	1=Option A - current offer 2=Option B - Future offer
timpref5	Choice between 20,000 shs right now or 32,000 in three (3) months from now	factor	1=Option A - current offer 2=Option B - Future offer
timpref6	Choice between 20,000 shs right now or 35,000 in three (3) months from now	factor	1=Option A - current offer 2=Option B - Future offer
sht_pref	How much would you be willing to accept in three months from now to forego shs 20	numeric	
off2_timpref1	Choice between 20,000 shs right now or 20,000 in Six (6) months from now	factor	1=Option A - current offer 2=Option B - Future offer
off2_timpref2	Choice between 20,000 shs right now or 23,000 in Six (6) months from now	factor	1=Option A - current offer 2=Option B - Future offer
off2_timpref3	Choice between 20,000 shs right now or 26,000 in Six (6) months from now	factor	1=Option A - current offer 2=Option B - Future offer
off2_timpref4	Choice between 20,000 shs right now or 29,000 in Six (6) months from now	factor	1=Option A - current offer 2=Option B - Future offer
off2_timpref5	Choice between 20,000 shs right now or 32,000 in Six (6) months from now	factor	1=Option A - current offer 2=Option B - Future offer
off2_timpref6	Choice between 20,000 shs right now or 35,000 in Six (6) months from now	factor	1=Option A - current offer 2=Option B - Future offer
off2_sht_pref	How much would you be willing to accept in six months from now to forego shs 2000	numeric	

(continued)

Variable	Var label	Var type	Value label
risk_option	Consider six possible options for winning some money as shown in this table. Stud	factor	1=Option 1: Head 6,200; Tails 6,200 2=Option 2: Heads 5,600; Tails 11,100 3=Option 3: Heads 5,000; Tails 15,000 4=Option 4: Heads 3,700; Tails 19,000 5=Option 5: Heads 1,300; Tails 24,000 6=Option 6: Heads 0; Tails 25,000 7=I do not understand and do not wish to respond

28 Section_duration

Variable	Var label	Var type	Value label
inter	Name of interviewer	factor	1=SM 2=IM 3=LB 4=CA 5=JB 6=ES 7=BC 8=PN
time_hhlist	Meta Data (time it took to complete the household listing section)	character	
time_hhwlftr	Meta Data (time it took to complete the household welfare section)	character	
time_assts	Meta Data (time it took to complete the assets section)	character	
time_shock	Meta Data (time it took to complete the shock section)	character	
time_crps	Meta Data (time it took to complete the crops section)	character	
time_inc	Meta Data (time it took to complete the income section)	character	
time_exp	Meta Data (time it took to complete the expenditure section)	character	
time_riskpres	Meta Data (time it took to complete the risk and time preference section)	character	
time_watsan	Meta Data (time it took to complete the water and sanitation section)	character	

(continued)

Variable	Var label	Var type	Value label
time_corridors	Meta Data (time it took to complete the corridors section)	character	

29 Shocks

Variable	Var label	Var type	Value label
shock_Code	Shock Code	factor	1=Chronic or severe illness or accident of a household member 2=Death of a household member 3=Household member jailed 4=Fire on property 5=Robbery/burglary 6=Dwelling damaged 7=Drought or extended period of no rain 8=Floods 9=Crop failure 10=Livestock disease/death 11=Livestock theft (including raids) 12=Household business failure (non-agricultural) 13=Loss of employment 14=Large fall in sale prices for crops and or livestock 15=Large rise in prices of food 16=Large rise in prices of agricultural inputs (e.g. agrochemicals, machinery, hire 17=Loss of land 18=End of regular assistance (e.g. Pension, cash transfer, remittances) from outside 19=Ethnic or clan clashes 20=Other conflict or violence
shock_effect	Level of effect the shock had on the households	factor	1=Severe 2=Very severe 3=Mild 4=Very mild
shock_times	Number of times the shock happened in the last 12 months	numeric	
resp1	Unconditional help from relatives/friends	factor	0=No 1=Yes
resp2	Unconditional help from government	factor	0=No 1=Yes

(continued)

Variable	Var label	Var type	Value label
resp3	Reduced food or relied on less preferred option	factor	0=No 1=Yes
resp4	Changed cropping practices (crop choices or technology)	factor	0=No 1=Yes
resp5	Household member(s) took on more employment	factor	0=No 1=Yes
resp6	Household member(s) migrated	factor	0=No 1=Yes
resp7	Relied on savings	factor	0=No 1=Yes
resp8	Received insurance pay out	factor	0=No 1=Yes
resp9	Obtained credit (from formal institutions or friends)	factor	0=No 1=Yes
resp10	Sold household assets	factor	0=No 1=Yes
resp11	Sold livestock	factor	0=No 1=Yes
resp12	Migrated to another place	factor	0=No 1=Yes
resp13	Did nothing	factor	0=No 1=Yes
resp96	Used other coping strategies	factor	0=No 1=Yes
resp14	Reported the case to police/ authorities	factor	0=No 1=Yes

30 Water_and_sanitation

Variable	Var label	Var type	Value label
h2o_amt	On average, how many litres of water does your household use (for all purposes)	numeric	
h2o_time	How much time (in minutes while walking) does it take to fetch water from the mai	numeric	
h2o_commit	Are the protected water sources in your community managed by user committees?	factor	1=Dont know 1=Yes 0=No

(continued)

Variable	Var label	Var type	Value label
h2o_trt	What do you do to the water to make it safe for drinking?	factor	1=sedimentation - letting water to be still 2=Filtering (e.g ceramic filters) 3=Disinfection - chlorine sub boiling 4=None of the above - it is safe 5=None of the above
h2o_chg	Has the availability of safe water in your community changed in the last 5 years?	factor	1=Dont know 2=Improved 3=Same 4=Worsened
h2o_acclg	What are the main constraints that your household faces in accessing safe water s	factor	1=Long distance 2=Poor quality sources 3=High Costs 4=Insecure access 5=Other (please specify)